

Bayonet II Assembly Instructions

FEUT[®]



GARMIN
GIRO

GARMIN

Chipone

GARMIN

SLIPSTREAM
SPORTS

GIRO



REQUIRED PARTS:

1. M6 x 30mm Bolts (2)
2. M5 Set Screw (1)
3. Bayonet II Stem Extension w/ Face Plate (1)
4. Knuckle Side Plate w/ Bolt (1)
5. Bayonet II Top Crown (1)
6. M6 x 18mm Bolt (1)
7. Bayonet II Knuckle (1)
8. Steerer Nut (1)
9. Steerer Screw (1)
10. Top Bearing Race (1)
11. 45° x 36° I.S. Bearing (2)
12. Lower Bearing Race (1)

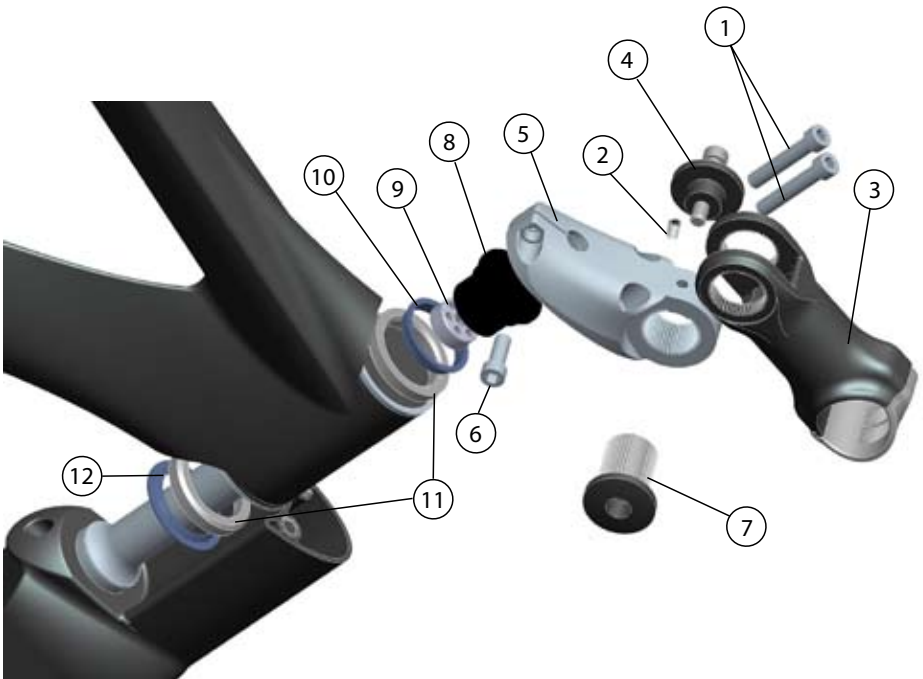




Fig. 1

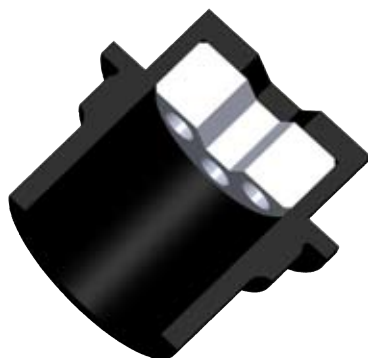


Fig. 2



Fig. 3

Step 1

Install the Bearing Lower Race on the forks Steerer Shaft like you would on any standard fork. See Fig.1

Step 2

Assemble the Steerer Shaft Nut and Steerer Screw.

- Be sure to use an Anti-Seize Compound on the aluminum threads to prevent seizing and galling.
- Using the 6mm Allen key, thread the Steerer Screw into the Shaft Nut in until it hits the top of the Shaft Nut. Do not tighten the Steerer Screw down. You are just moving it out of the way for installation later. See Fig. 2

Step 3

Slide the Bearing Top Race on to the Steerer Shaft Nut. See Fig. 3

Step 4

Insert the bearings into the frame.

Step 5

Insert the Bayonet II Fork into the frame.

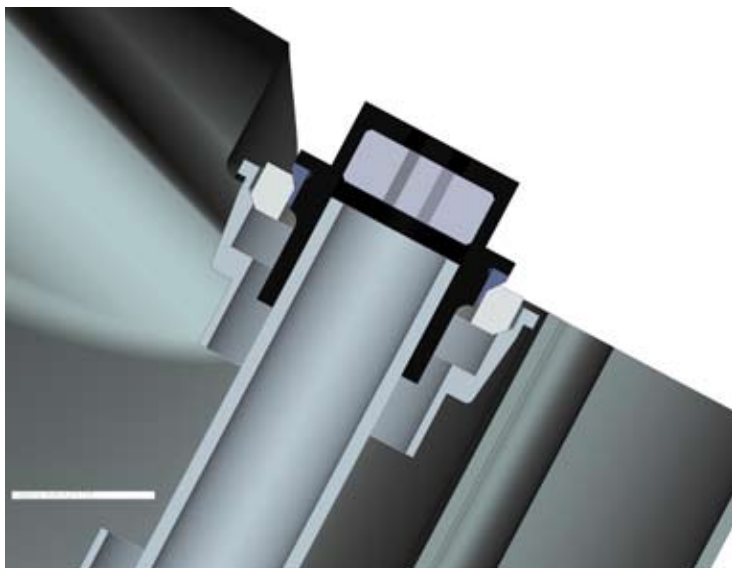


Fig. 6

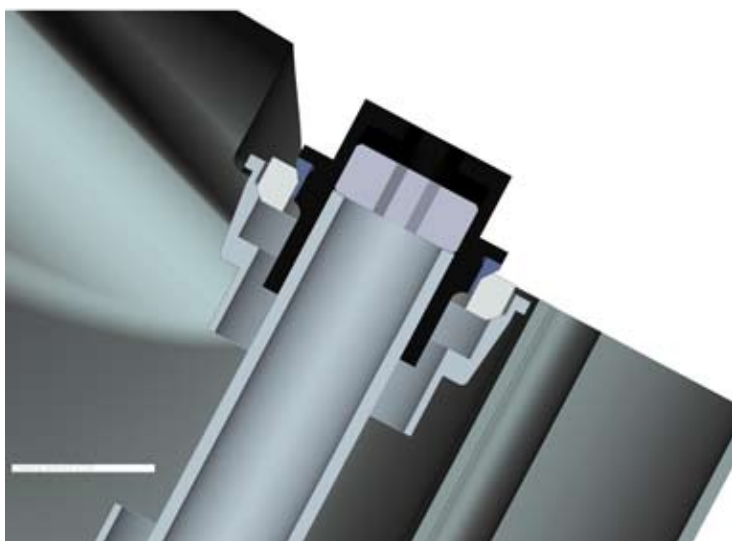


Fig. 7

Step 6

Thread the Steerer Shaft Nut onto the Steerer Shaft.

- Be sure to use an Anti-Seize Compound on the aluminum threads to prevent seizing and galling.
- Use an 8mm Allen key to thread the Shaft Nut onto the Steerer Shaft
- This will determine the headset tension. Adjust it just like a standard threadless headset. See Fig. 6

Step 7

Adjust the Steerer Screw to hold the headset adjustment.

- Using a 6mm Allen, insert the Allen key through the opening in the Steerer Nut into the Steerer Screw.
- Turn the Steerer Screw clockwise until it contacts the Steerer Shaft. The Steerer Screw holds the headset in adjustment.
- Tighten this to 12Nm with a torque wrench.
- See Fig. 7

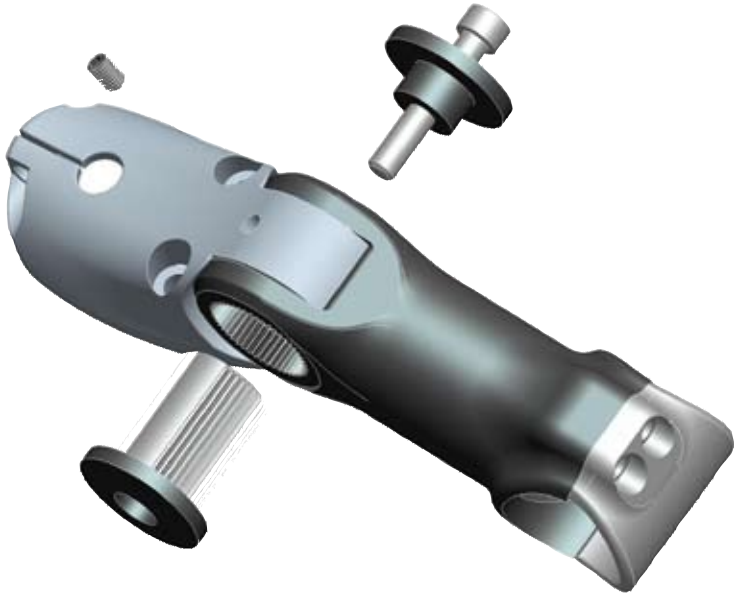


Fig. 8



Fig. 9

Step 8

Assemble the stem extension to the Bayonet II top crown.

- Slip the knuckle through the stem extension, being careful to line up the flat in the knuckle with the flat in the top crown.
- Insert the bolt through the end cap into the knuckle.
- Insert the set screw into the stem, only tighten after desired stem extension position is set.

Step 9

Install the Bayonet II Stem.

- Install the Bayonet II Stem over the Steerer Shaft Nut.
- Insert the M6 x 30mm bolts through each hole in the stem, through to the threads in the Bayonet II Fork. Tightening these bolts also holds the stem extension's knuckle in place.
- Tighten the bolt to 12Nm with a torque wrench. See Fig.9

Step 10

Tighten the M6 x 18mm pinch bolt in the Bayonet II Stem.

- Tighten the bolt to 12Nm with a torque wrench.

AND YOU'RE DONE!

Please remember to check all bolts and hardware regularly for correct tension to ensure optimum performance and function.



FELT BICYCLES
12 CHRYSLER
IRVINE, CA, 92618
USA
www.feltbicycles.com